

FOR SALE

LAND OPPORTUNITY

CUMBO YARD INDUSTRIAL PARK

DISTRICT 08-OPEQUON, MAP 2 PARCEL 1 AND 1.4

Martinsburg, WV 25403



PROPERTY FEATURES

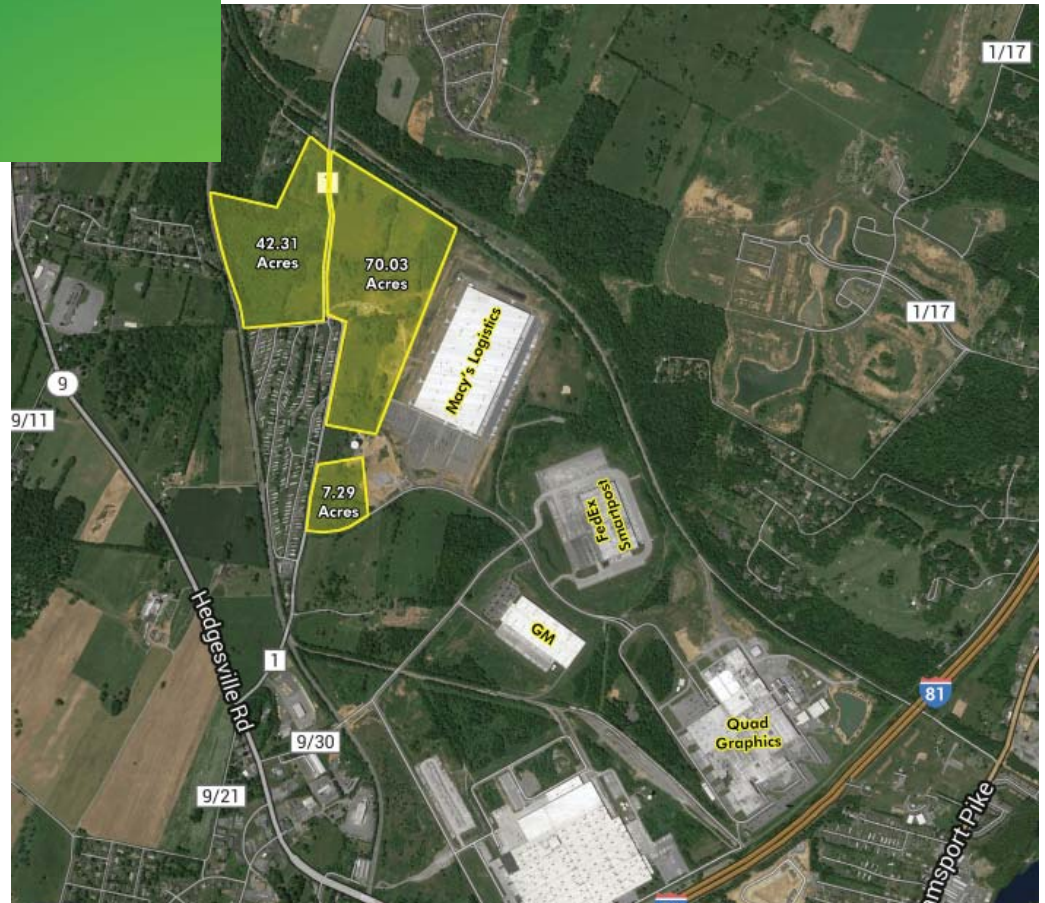
- + 119.63 ± acres total
 - Parcel 1: 112.34 ± acres
 - Parcel 1.4: 7.29 ± acres
- + Located at Exit 16 West, I-81
- + Utilities available to the site
 - Public water, sewer and gas
- + Flexible zoning in Berkeley County
- + Currently used as Industrial Park land



CONTACT US

JOHN SKOGLIN

Vice President
+1 410 244 3132
john.skoglin@cbre.com

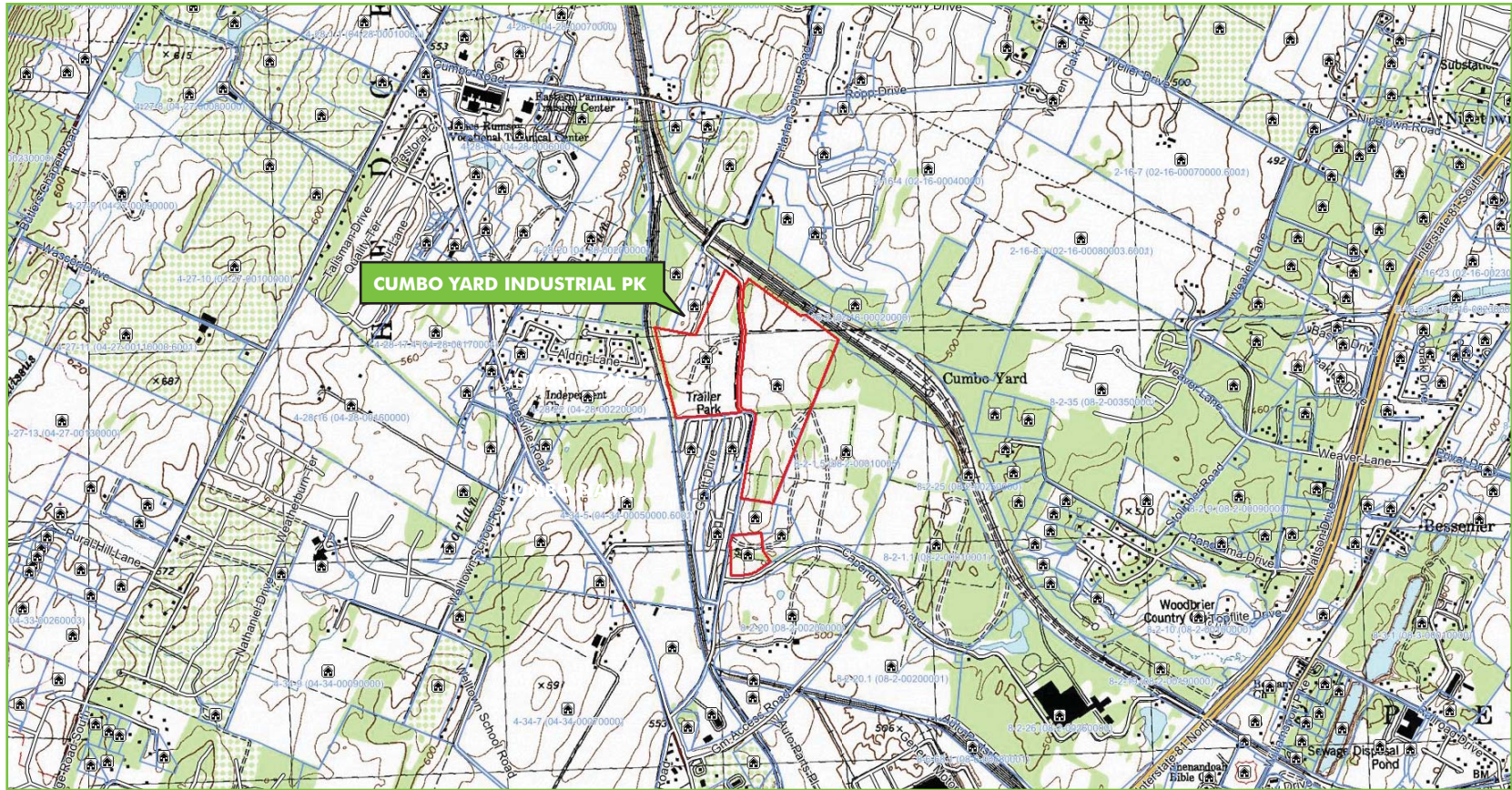


www.cbre.com/usa

CBRE

FOR SALE CUMBO YARD INDUSTRIAL PARK

DISTRICT 08 - OPEQUON
MAP 2 PARCEL 1 & 1.4
Martinsburg, WV 25403



©2016 CBRE, Inc. CBRE and the CBRE logo are service marks of CBRE, Inc. and/or its affiliated or related companies in the United States and other countries. We obtained the information herein from sources we believe to be reliable. However, we have not verified its accuracy and make no guarantee, warranty or representation about it. It is submitted subject to the possibility of errors, omissions, change of price, rental or other conditions, prior sale, lease or financing, or withdrawal without notice. We include projections, opinions, assumptions or estimates for example only, and they may not represent current or future performance of the property. You and your tax and legal advisors should conduct your own investigation of the property and transaction.

Photos herein are the property of their respective owners and use of these images without the express written consent of the owner is prohibited.

www.cbre.com/usa

CBRE