

FOR SALE

TABLER STATION ROAD

MARTINSBURG, WV 25405

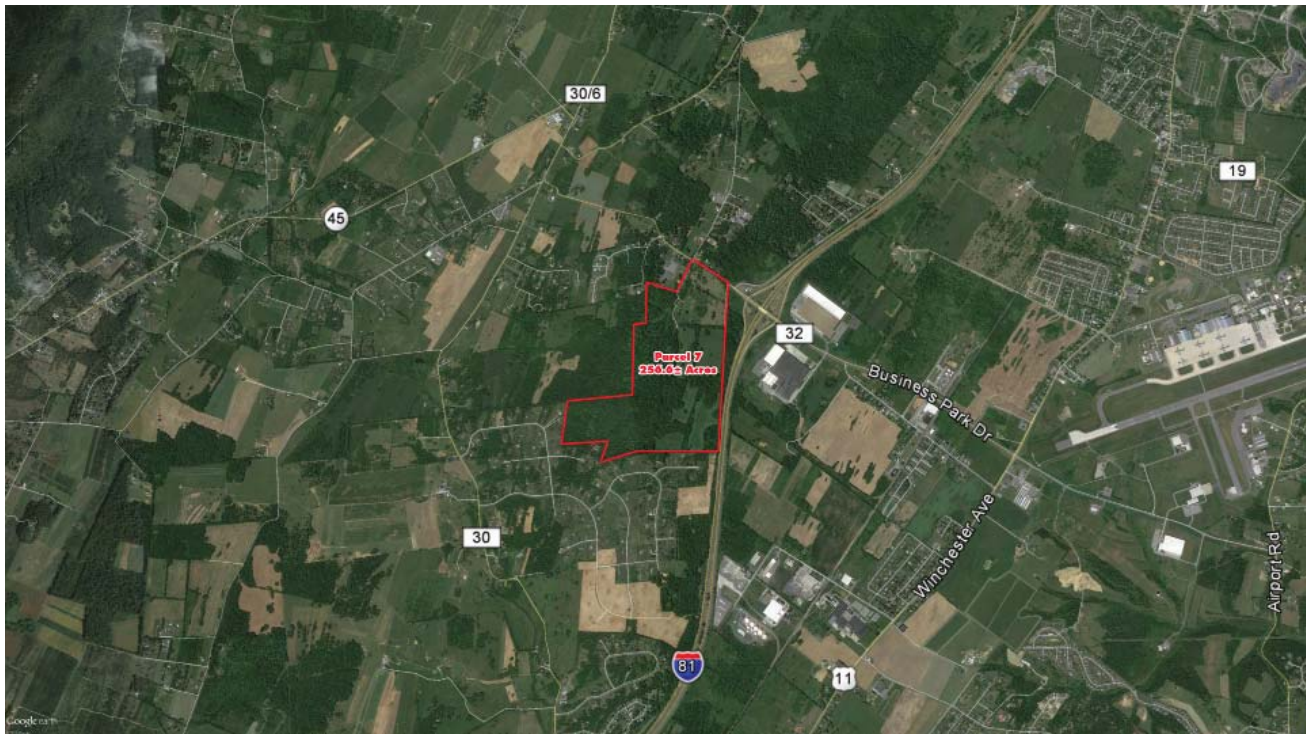
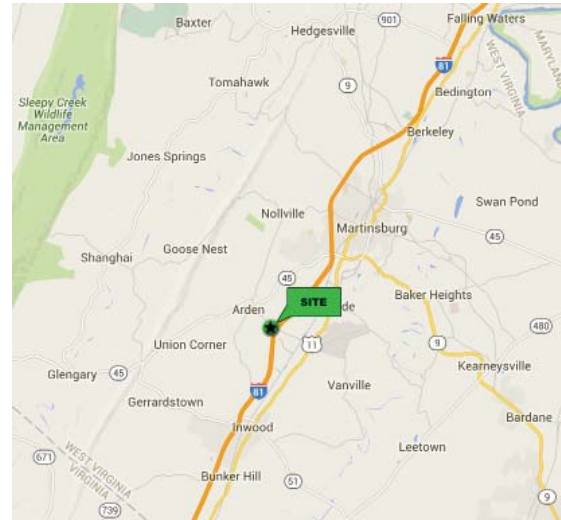


PROPERTY FEATURES

- + 256.6± acres
- + Septic and well water
- + ¼ mile from Procter & Gamble
- + Contiguous to Interstate-81
- + Flexible zoning in Berkeley County
- + Currently used as farmland



LOCATION MAP



www.cbre.com/baltimore

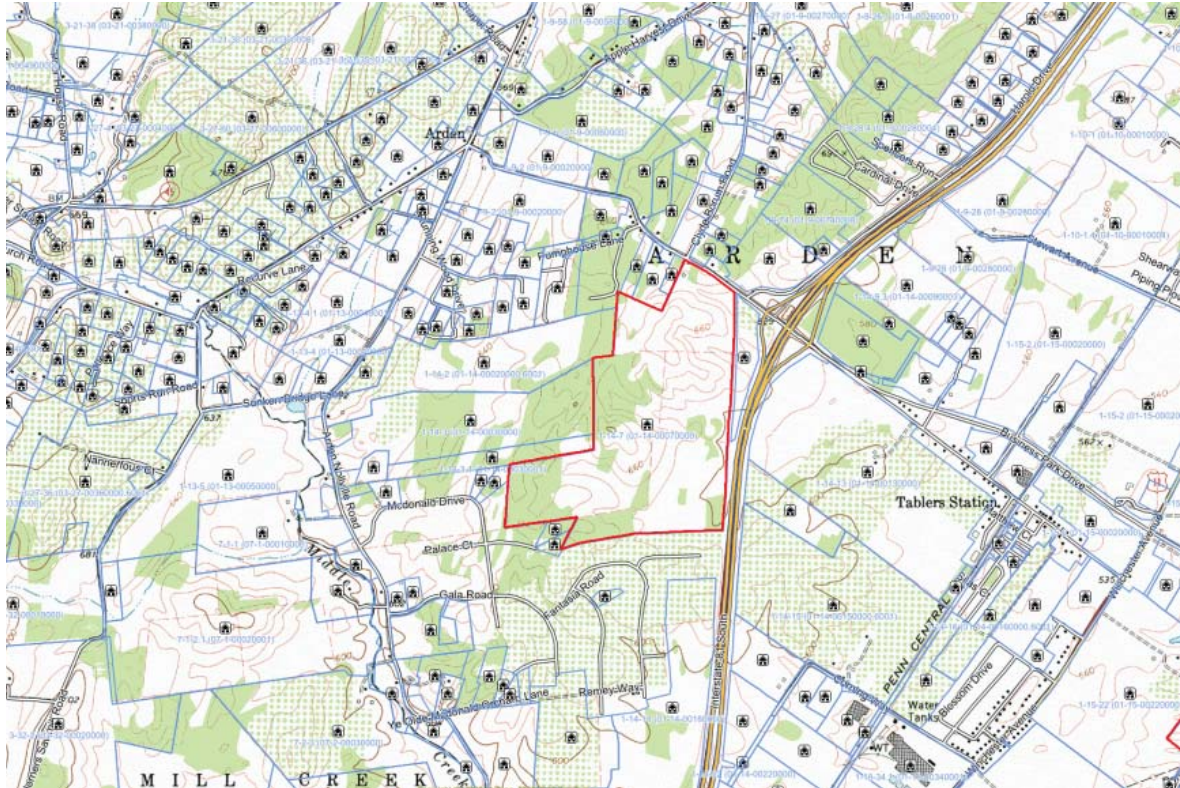
CBRE

FOR SALE TABLE STATION ROAD

MARTINSBURG, WV 25405



PARCEL MAP



CONTACT US

JOHN SKOGLIN

Vice President

+1 410 244 3132

john.skoglin@cbre.com

© 2016 CBRE, Inc. The information contained in this document has been obtained from sources believed reliable. While CBRE, Inc. does not doubt its accuracy, CBRE, Inc. has not verified it and makes no guarantee, warranty or representation about it. It is your responsibility to independently confirm its accuracy and completeness. Any projections, opinions, assumptions or estimates used are for example only and do not represent the current or future performance of the property. The value of this transaction to you depends on tax and other factors which should be evaluated by your tax, financial and legal advisors. You and your advisors should conduct a careful, independent investigation of the property to determine to your satisfaction the suitability of the property for your needs.

Photos herein are the property of their respective owners and use of these images without the express written consent of the owner is prohibited.

www.cbre.com/baltimore

CBRE